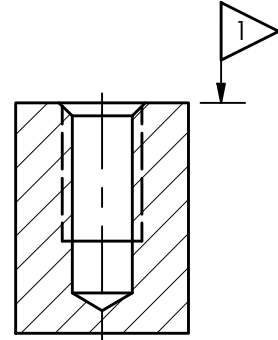
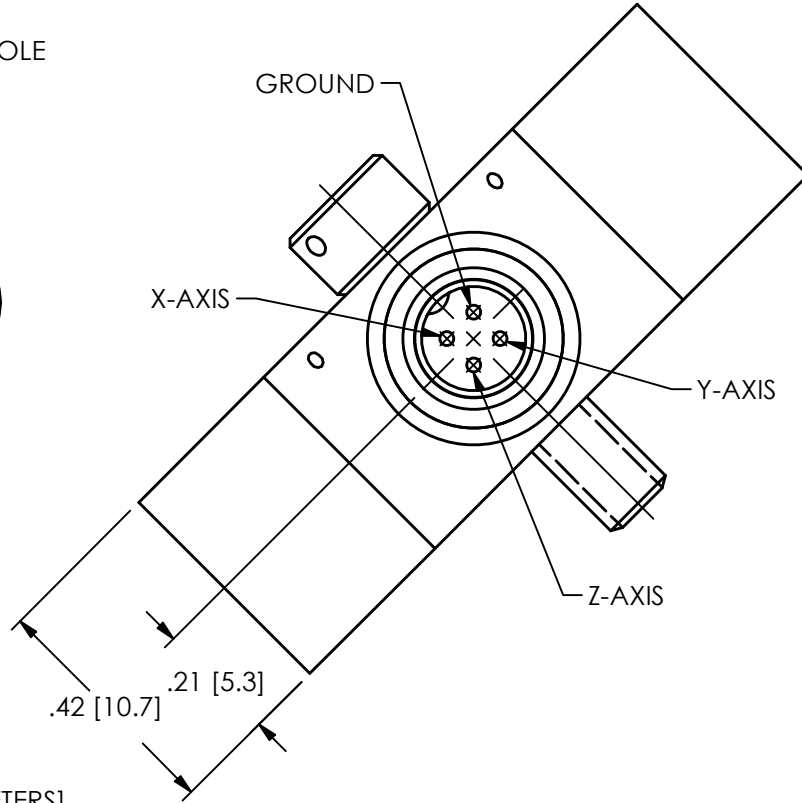
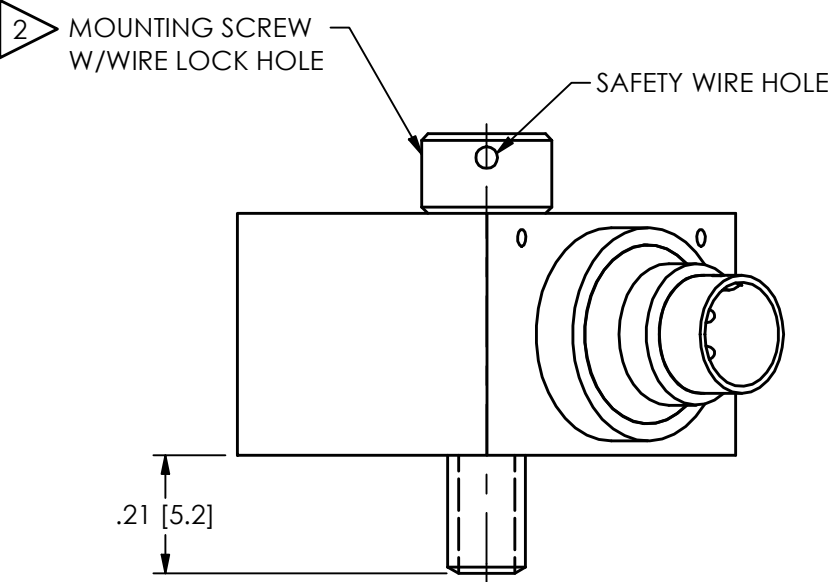
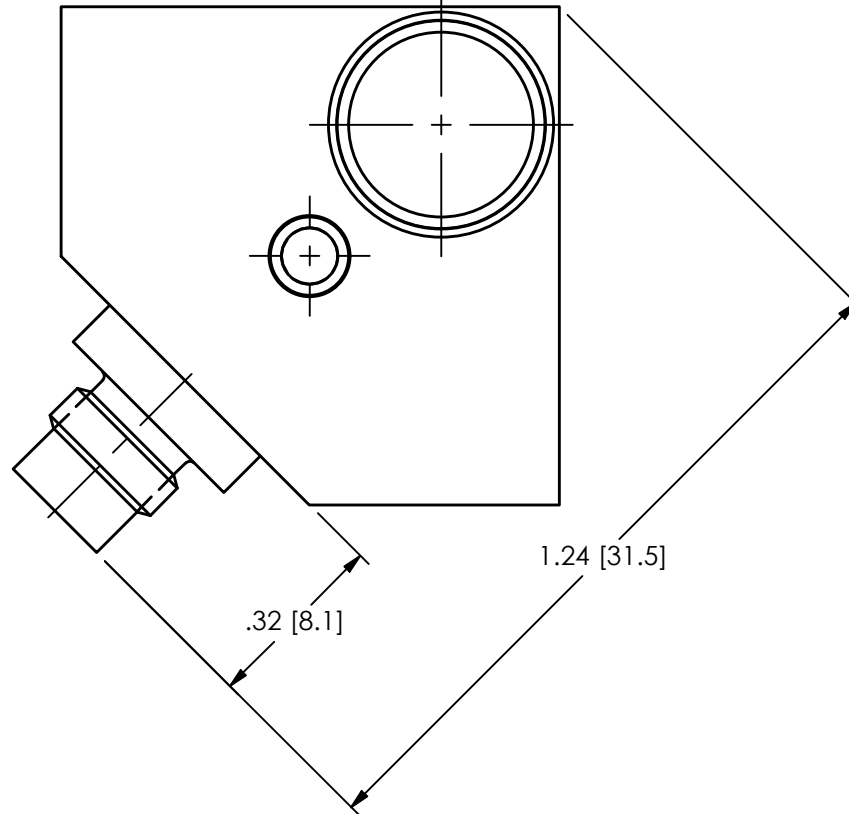
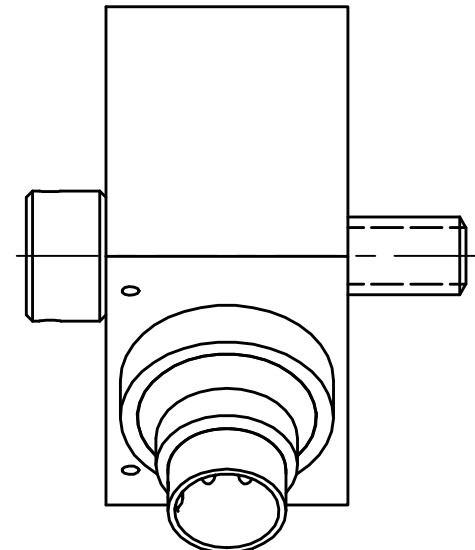
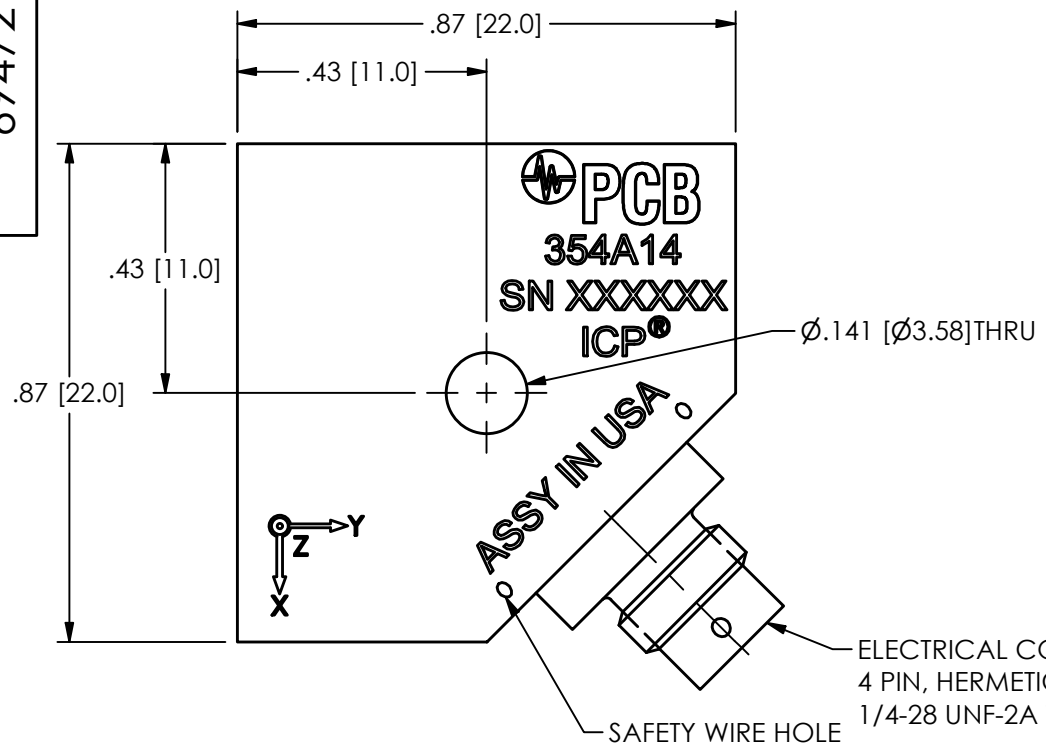


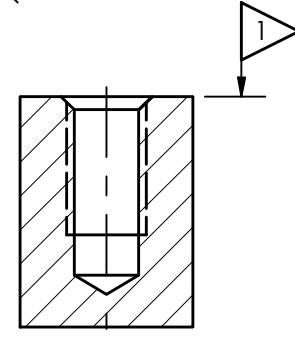
PCB Piezotronics Inc. claims proprietary rights in the information disclosed hereon. Neither it nor any reproduction thereof will be disclosed to others without the written consent of PCB Piezotronics Inc.

69472

REVISIONS		
REV	DESCRIPTION	DIN
A	ADDED METRIC MOUNTING, CORRECTED 6-32 HOLE NOTE	55405



6-32 MOUNTING HOLE PREPARATION
 $\varnothing.107[\varnothing2.75] \nabla.33[8.4] \text{ MIN}$
 6-32 UNC-2B $\nabla.24[6.1] \text{ MIN}$



MX3.5 X0.60 MOUNTING HOLE PREPARATION
 $\varnothing.114[\varnothing2.9] \nabla.31[7.9] \text{ MIN}$
 M3.5 X 0.60-6H $\nabla.24[6.1] \text{ MIN}$

3.) STUD HIDDEN IN TOP VIEW FOR CLARITY

2 RECOMMENDED MOUNTING TORQUE
 6-32 SCREW: 5-6 INCH POUNDS [57-67 NEWTON CENTIMETERS]
 M3.5X0.60 SCREW: 6-7 INCH POUNDS [68-79 NEWTON CENTIMETERS]

1 MOUNTING SURFACE SHOULD BE FLAT WITH .001 [.03] TIR WITH A SURFACE FINISH OF 63[1.6] OR BETTER FOR BEST RESULTS

UNLESS OTHERWISE SPECIFIED TOLERANCES ARE:	
DIMENSIONS IN INCHES	DIMENSIONS IN MILLIMETERS [IN BRACKETS]
DECIMALS XX ±.01 XXX ±.005	DECIMALS X ±.03 XX ±0.13
ANGLES ± 2 DEGREES	ANGLES ± 2 DEGREES
CABLE TOLERANCES IN ENGLISH	CABLE TOLERANCES IN METRIC
1" ≤ LENGTH < 1' = +1' / - 0	2.54cm ≤ LENGTH < 30.5cm = +2.54cm / - 0
1' ≤ LENGTH < 5' = +2" / - 0	30.5cm ≤ LENGTH < 1.5m = +5.1cm / - 0
5' ≤ LENGTH < 100' = +6" / - 0	1.5m ≤ LENGTH < 30.5m = +15.2cm / - 0
100' ≤ LENGTH = +1' / - 0	30.5m ≤ LENGTH = +30.5cm / - 0
FILLETS AND RADII .003 - .005	FILLETS AND RADII 0.07 - 0.13

DRAWN	CHECKED		ENGINEER	
	PST	12/16/24	JDM	12/16/24
TITLE				
INSTALLATION DRAWING CASE ISOLATED TRIAxIAL ACCELEROMETER				

PCB PIEZOTRONICS
 AN AMPHENOL COMPANY
 3425 WALDEN AVE. DEPEW, NY 14043
 (716) 684-0001 E-MAIL: sales@pcb.com

CODE IDENT. NO. 52681	SIZE B	DWG. NO. 69472
SCALE: 3X	SHEET 1 OF 1	